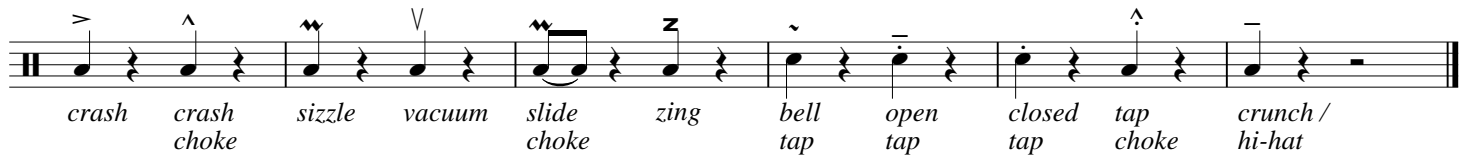


Cymbal Key & Explanation



•**Crash** - a full body sound by creating a flam on the edge of the cymbal then on the face of the cymbal. Both high and low hold variations.

•**Crash Choke** - a crash followed by muting the cymbals against the body.

•**Sizzle** - made by bringing the cymbals together, but with a gentler force causing a sustained sizzle sound.

•**Vacuum** - a vacuum effect achieved by placing the cymbals directly against each other vertically (but with one cymbal slightly higher than the other) and then aggressively bringing the cymbals in alignment with one another, causing the vacuum effect to occur

•**Slidechoke** - a sizzle followed by a vacuum.

•**Zing** - made by scraping outward along the inside of the bow of one cymbal with the edge of the other

•**Bell Tap** - a tap, but this time against the inside bell

•**Open Tap** - made by tapping the edge of one cymbal with the other

•**Closed Tap** - a tap while cymbals are resting against the body under the arms

•**Tap Choke** - an open tap followed by a muting of the cymbals under the arms.

•**Crunch / Hi-Hats** - cymbal edges are pressed against body while resting on one arm. Then, press front of cymbals together to create a nice chick sound like the hi-hats on a drumset.